



SaunaFin

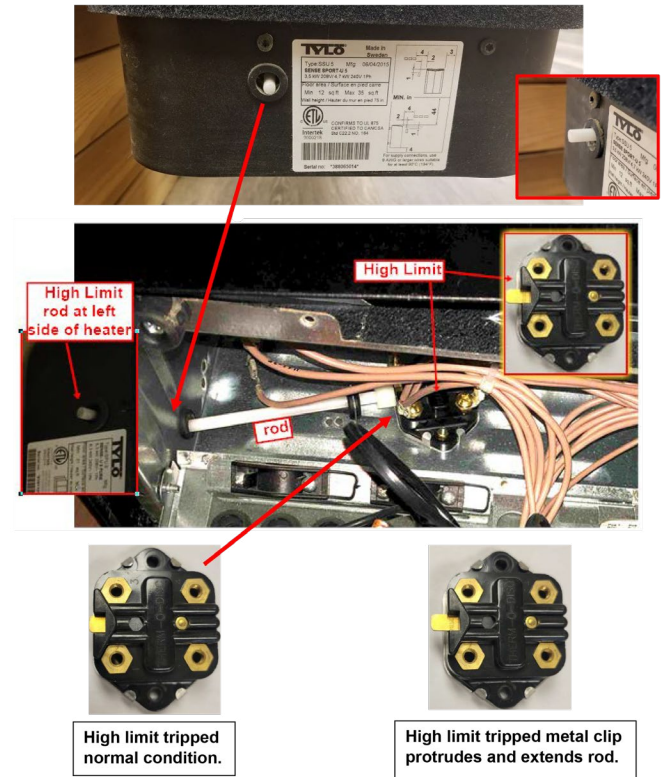
Saunas & Steambaths

TYLO SENSE DIAGNOSTIC (COMBI & PLUS MODELS)

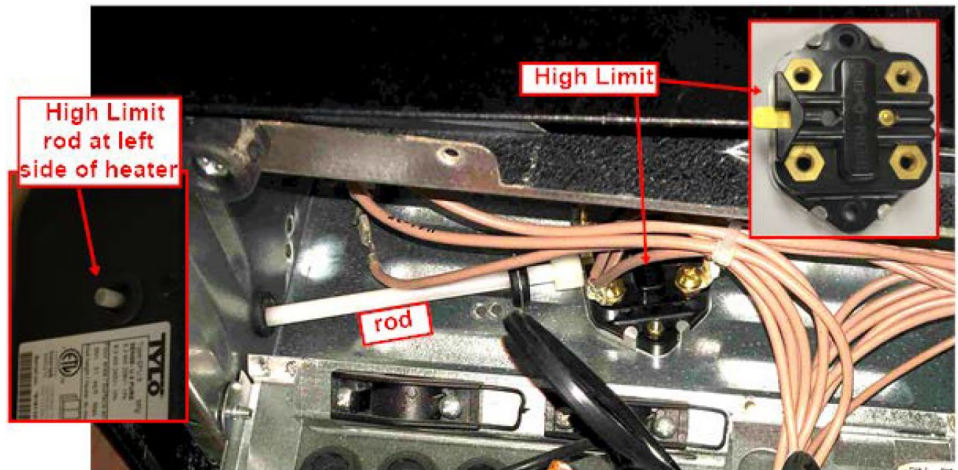
A. CONTROL IS BLANK (NO DISPLAY)

1. Heater integral high limit has tripped

If high limit trips repeatedly, it usually means there is something incorrect with sauna installation or construction. See High Limit diagnostic page & questions.



NOTE: On occasion, white plastic white can be misaligned inside heater, so that even though high limit has tripped, it does not push out white plastic button. When bottom junction box is open, you can determine if high limit itself has tripped by visually checking it. You can bend bracket securing plastic stem to re-align it.



2. On/Off Switch has failed

This is not a common issue. Generally, this only occurs several years after installation, if installer failed to install copper connectors on terminal Block. Look for burn marks on switch. And check to see if copper connectors install correctly. **NOTE:** Turn off breaker in fused panel before opening bottom heater junction box.

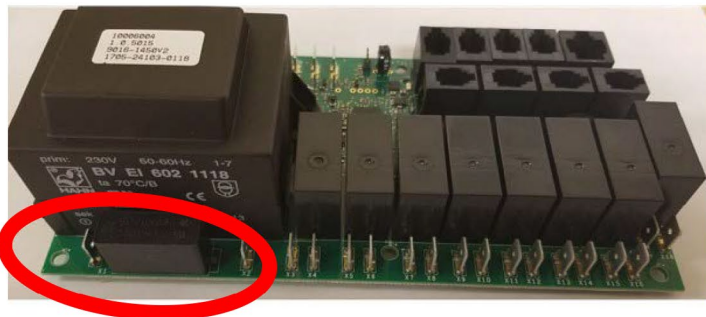
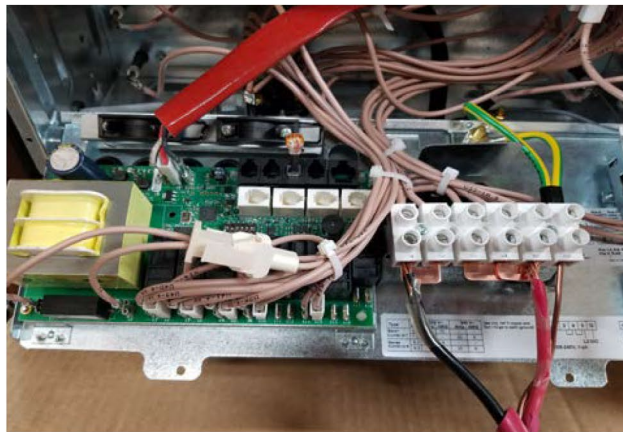


3. Circuit Board (PCB) has failed

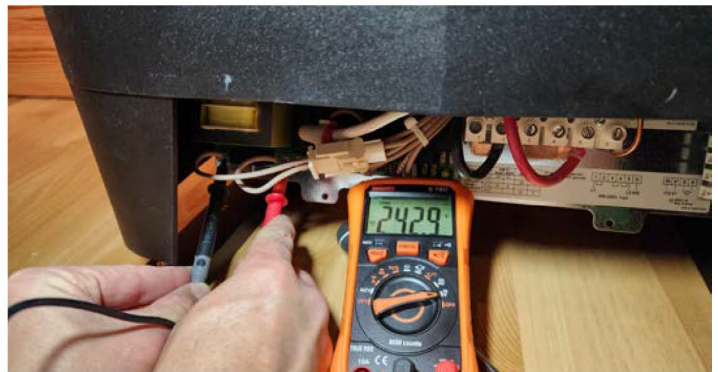
Tylo Circuit Board Diagnostic

1. Turn off breaker
2. Remove two screws from bottom. Electrical cover will swing down.
3. Turn on circuit breaker.
4. Turn on/ off knob to on.
5. Turn on control if it is responsive.
6. Using a meter, test across X1 & X2. You should read 240 volt (or very close)
7. If you have 240v, LED lights should light up on circuit board

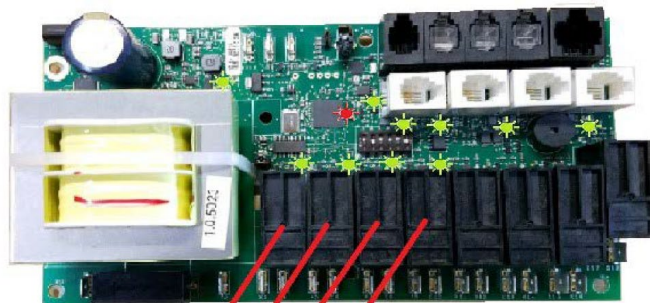
NOTE: This should only be done by an electrician.



Check for 240 at X1 and X2 on the circuit board. to confirm if you have the 240 volt.

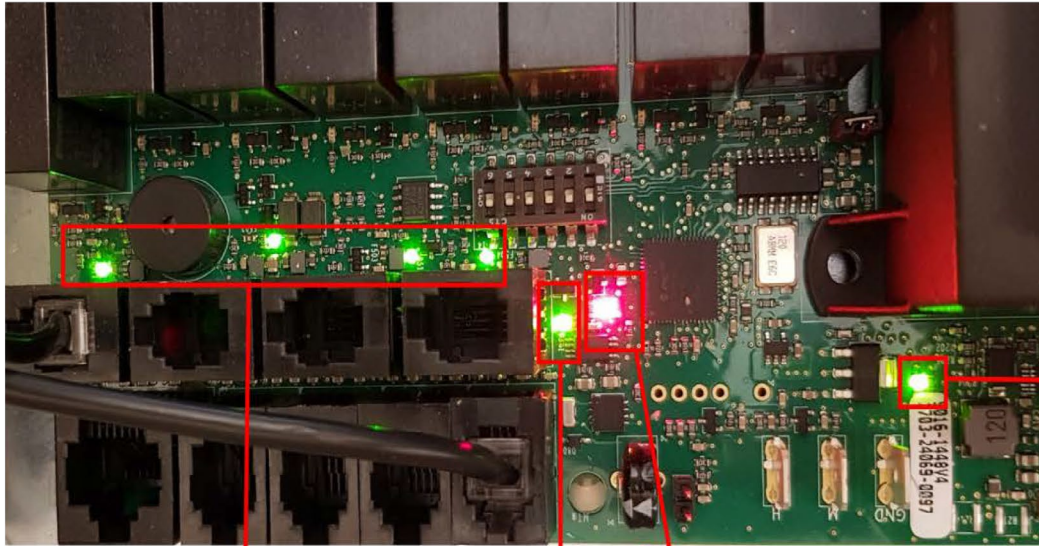


Are there any LED lit on circuit board?
Is red LED light on?



- Heater element
- Heater element
- Heater element
- Water Tank Element

If there are LEDs on board, please take picture and forward to tech support so we can review which lights are lit.



This green led shows that there is power (12Vdc) from the transformer. If this doesnt lit up, check if there is power to the circuit card. There should be around 200-240V between X1-X2, if there is power on X1-X2 but the led is not on, the transformer may be faulty and circuit card need to be replaced

These 4 led show that connections 6,7,8 and 9 have power. If the led besides any of the contacts is not on it means that contact has not any power and will not work.

The red led means the CPU has contact with the control panel. It can take up to 90 seconds after power on before the red led is on. If it doesnt lit up it is usally a problem with the connection to the control panel

This green led indicate that the CPU has power. If this led is not lit up, the circuitcard is faulty. Error will be that control panel will not connect.

Note: Ports shown here with NTC sensor (silver bullet) in port#1 (used for Combi Pure & all Plus models). Combi Elite sensor (mini circuit board) will be plugged into port #6



SaunaFin

Saunas & Steambaths

SAUNAFIN SAUNA & STEAM

106 Rayette Road, Unit 1, Concord, ON, L4K 2G3

TOLL-FREE

1-800-387-7029

PHONE

905-738-4017

EMAIL

info@saunafin.com

WEB

www.saunafin.com